

Community Resources

Charlestown | Hopkinton | Richmond



April 2023



Hello! Nice to meet you! I'm Amy, a Community Health worker with the Chariho Youth Task Force. The Chariho Youth Task Force promotes health at every stage and educates, empowers, and engages youth and adults to promote physical and mental well-being.

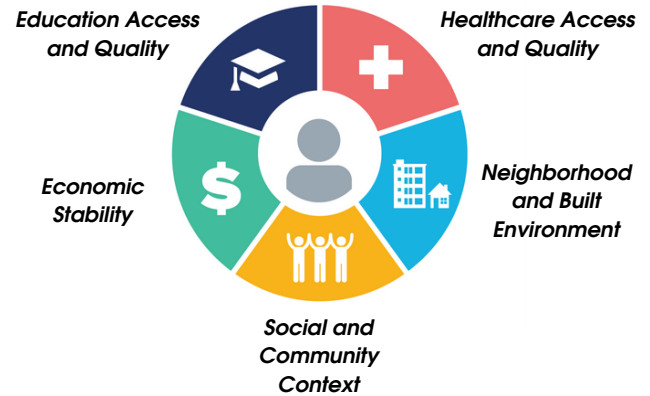
We have created this quick resource guide based on the Social Determinates of Health (SDOH). The US Department of Health identifies SDOH as "the conditions in which people are born, live, learn, work, play, worship, and age that affects a wide range of health, functioning, and quality-of-life outcomes and risks." Simply put, where you live plays a significant role in your overall health. We have chosen local resources and supports specific to the Chariho community.

If you have questions, would like assistance reaching out to any of the resources in this guide or need help in other areas, feel free to reach out, and we can work together to find the support you need.

Be well,

Amy Neilson

Social Determinants of Health



Social Determinants of Health Copyright-free  Healthy People 2030

Contact Info:

Amy Neilson, CCHW, TTS
Community Health Worker

 amy@charihoyouth.org

 401-212-2741

 @CharihoCHW

 CharihoYouth.org/health

This guide was made in part with funding and support from:



WOOD RIVER HEALTH
Caring for Our Community Since 1976





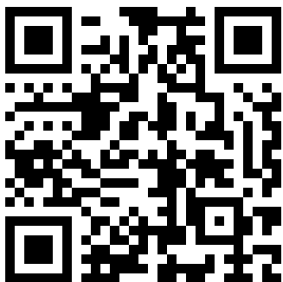
CHARIHO
Youth
TASK FORCE

educate.
empower.
engage.



We envision a society driven toward physical and mental well-being created through collaboration, education, and activism to promote a positive community climate

Substance use Prevention. Mental Health Promotion.



Get Involved

Sign up for our newsletter, join us for a community hike, or attend a monthly coalition meeting.



Mental Health Resources

Crisis-based supports, local resources, or stress reduction techniques right at your finger tips.



Substance Use Education

Take a moment to learn something new about alcohol, tobacco, and other drugs.



Strong Arms Support Group

Twice monthly virtual support group for those who have lost a loved one to addiction.

Dan Fitzgerald, MPH, ICPS | Executive Director

✉ dan@charihoyouth.org  CharihoYouth.org

 @CharihoYouth  @CharihoYouth



CHARIHO
Youth
TASK FORCE

Town Government



Town of Charlestown

4540 South County Trail
Charlestown RI 02813
(401) 364-1200
<https://charlestownri.gov>



Town of Hopkinton

1 Town House Road
Hopkinton RI 02833
(401) 377-7777
<https://www.hopkintonri.org>



Town of Richmond

5 Richmond Townhouse Road
Wyoming, RI 02898
(401) 539-9000
<https://www.richmondri.com>

Public Libraries

Library cards are free to all Rhode Island residents. Your library card is good at every public library in the state. In addition to traditional library materials, you can find free programs, free wi-fi, computers and more



Cross Mills Public Library
4417 Old Post Rd
Charlestown, RI
(401) 364-6211
crossmills.org



Clark Memorial Library
7 Pinehurst Dr.
Richmond, RI
(401) 364-6100
www.clarklib.org



Ashaway Free Library
15 Knight St,
Ashaway, RI 02804
(401) 377-2770
ashawaylibrary.org



Langworthy Public Library
24 Spring St
Hope Valley, RI 02832
(401) 539-2851
<https://langworthylibrary.org>



CharihoYouth.org/health



CHARIHO
COMMUNITY
HEALTH WORKER

Public Schools



Chariho Regional School District

455A Switch Rd, Wood River Junction, RI 02894

(401) 364-7575

<https://www.chariho.k12.ri.us>

Ashaway Elementary School

12A Hillside Ave, Ashaway, RI 02804

(401) 377-2211

<https://ashaway.chariho.k12.ri.us>

Hope Valley Elementary School

15 Thelma Dr, Hope Valley, RI 02832

(401) 539-2321

<https://hopevalley.chariho.k12.ri.us>

Richmond Elementary School

190 Kingstown Rd, Richmond, RI 02898

(401) 539-2441

<https://richmond.chariho.k12.ri.us>

Charlestown Elementary School

363 Carolina Back Rd, Charlestown, RI 02813

(401) 364-7716 |

<https://charlestown.chariho.k12.ri.us>

Chariho Middle School

455B Switch Rd, Wood River Junction, RI 02894

(401) 364-0651

<https://cms.chariho.k12.ri.us>

Chariho High School

453 Switch Rd, Wood River Junction, RI 02894

Phone 401-364-7778

<https://chs.chariho.k12.ri.us>

Chariho Alternative Learning Academy

455C Switch Rd, Wood River Junction, RI 02894

(401) 315-2880

<https://cala.chariho.k12.ri.us>

CHARIHotech - Career & Technical Center

459 Switch Rd, Wood River Junction, RI 02894

(401) 364-6869

<https://charihotech.chariho.k12.ri.us>



Police, Fire & Rescue



Charlestown Police Department
4901 Old Post Road
Charlestown, RI 02813
Phone: 401-364-1212
<http://www.charlestownpolice.org>



Hopkinton Police Department
406 Woodville Road
Hopkinton, RI 02833
Phone: (401) 377-7750
<https://www.hopkintonpolice.org>



Richmond Police Department
1168 Main Street
Wyoming, RI 02898
(401) 539-8289
<https://www.richmondpd.org>

Ashaway Fire Department
(401) 377-4549
<https://www.ashawayfire.org>

Hope Valley - Wyoming Fire Department
(401) 539-2229
<https://www.hvwfd.org>

Richmond-Carolina Fire Department
(401) 364-3449
<https://www.rcfd.org>

Charlestown Fire District
Charlestown Richmond Station (401) 364-9909
Cross Mills Station (401) 364-6511
<https://www.charlestownfd.org>

In case of emergency.
dial 911

Safely Dispose of Prescription Medication

All three police stations have disposal bins for prescription medicines, including controlled substances (like painkillers) and over-the-counter medications.



Ashaway Ambulance
(401) 377-8312
<https://www.ashawayambulance.com>

Hope Valley Ambulance
(401) 539-2839
<https://www.hvamb.org>

Charlestown Ambulance Rescue Service
(401) 364-3742
<https://www.charlestownrescue.org>



CharihoYouth.org/health



Animal Control



Charlestown Animal Control

50 Sand Hill Road, Charlestown, RI 02813

(401) 364-1211

<https://charlestownri.gov/animalcontrol>



Hopkinton Animal Control

Charles Niles Complex

395 Woodville Road, Hopkinton, RI 02833

(401) 377-7785

<https://hopkintonpolice.org>



Richmond Animal Control

51 Buttonwoods Road, Richmond, RI 02898

(401) 539-4236

<https://www.richmondri.com/145/Richmond-Animal-Control>

For assistance with a wild animal, please call the RI Dept of Environmental Management (DEM) (401) 222-3070



Post Offices

Some of the smaller post offices have limited days/hours. Check usps.com for schedules.

HOPE VALLEY 1027 Main St., Hope Valley, RI 02832

WYOMING 1190 Main St., Wyoming, RI 02898

HOPKINTON 482 Main St., Hopkinton, RI 02833

CAROLINA 790 Alton Carolina Rd., Carolina, RI 02812

WOOD RIVER JUNCTION 446 Church St., Wood River Junction, RI 02894

SHANNOCK 196A Shannock Village Rd., Shannock, RI 02875

BRADFORD 416 Bradford Rd., Bradford, RI 02808

ASHAWAY 129 Main St., Ashaway, RI 02804

WEST KINGSTON 3484 Kingstown Rd., West Kingston, RI 02892

CHARLESTOWN 3970 Old Post Rd., Charlestown, RI 02813



CharihoYouth.org/health



Healthcare



WOOD RIVER HEALTH
Caring for Our Community Since 1976

Wood River Health

823 Main Street, Hope Valley, RI 02832

Phone: (401) 539-2461

11 Wells Street, Westerly, RI 02891

Phone: (401) 387-9611

Web: woodriverhealth.org

Wood River Health is dedicated to providing high-quality affordable medical, dental, behavioral, and social support services to patients of all ages. Express Care, pharmacy and lab services are offered on site at Hope Valley. Community Resources, a WIC (Women, Infant and Children) Program and a Sliding Fee Scale is available to eligible patients. They are welcoming new patients.



Thundermist Health Center of South County

1 River Street, Wakefield, RI 02879

Phone: 401-783-0523 Web: thundermisthealth.org

Thundermist Health Center of South County serves medical and dental patients but also has an expanded set of services, including Convenient Care (Thundermist's Walk-In Medical Service Center), behavioral health counseling, and pharmacy assistance and social services.



Gateway Healthcare
Lifespan. Delivering health with care.®

Gateway Healthcare - PIPBHC for Families and Children Program

4705 Old Post Rd, Charlestown, RI 02813

(401) 364-7705 | Lifespan.org

Promoting the Integration of Primary and Behavioral Health Care (PIPBHC) is a community health program that helps families bridge the gap between physical and mental health. PIPBHC services are centered on the entire family's health not just the individual client. PIPBHC offers a variety of treatments and referral options to clients and their families to best manage their symptoms and health conditions. Their goal is to improve overall family functioning and wellness. They also assist families in accessing services that address barriers related to housing, social connectedness, childcare, education, employment, food security, and income/benefits.



CharihoYouth.org/health



CHARIHO
COMMUNITY
HEALTH WORKER

Senior Services



Charlestown Sr. Community Center
100 Park Lane Ninigret Park, Charlestown, RI 02813
(401) 364-9955
charlestownri.gov/senior_community_center



Hopkinton Senior Services
Crandall House, 188 Main St., Ashaway, RI 02804
(401) 377-7795
hopkintonri.org/senior-services



Richmond Senior Center
1168 Main St. 2nd Floor, Wyoming, RI 02898
(401) 491-9404
richmondri.com/176/Community-Senior-Center



The Point
Rhode Island Office of Healthy Aging
(401) 462-4444 or call 211
<https://oha.ri.gov/point>

Explore options for healthcare, employment, and more; get help with applying to public and private programs



Southern Rhode Island Volunteers
100 Park Lane, Charlestown RI
(401) 552-7661
<https://www.southernrivol.org>

Southern Rhode Island Volunteers' mission is to support and provide aging-in-place assistance, meaningful service opportunities, and activities that promote and enhance independent living for mature individuals including seniors, disabled adults, and anyone interested in volunteer service opportunities.



CharihoYouth.org/health



CHARIHO
COMMUNITY
HEALTH WORKER

Food Assistance

RICAN - Rhode Island Center Assisting Those in Need

805 Alton Carolina Road (Rt 91,) Charlestown, RI

Phone: (401) 364-9412 Web: rhodeislandcan.org



RI Center Assisting those in Need (RICAN) is dedicated to providing food, clothing, and other vital support to neighbors in crisis. They also have a thrift store that helps support the food pantry. Donations are welcome.

RICAN offers weekly drive-thru and in-person shopping options several times a week. Call or check their website for days/hours.

PANTRY ON THE LANE

70 Bowling Lane, Bradford, RI

Phone: (401) 465-7745 Web: www.joyfellowshipri.org/food-pantry-on-the-lane.html



A weekly food pantry in Bradford, Rhode Island for Bradford and surrounding towns as well as any in need. Open for in-person shopping on Saturday mornings.

Check Facebook for updates @pantryonthelane

JONNYCAKE CENTER OF WESTERLY

23 Industrial Drive, Westerly, RI 02891

Phone: (401) 377-8069 Web: jonnycake.org



Jonnycake Center offers a monthly food distribution to qualified residents. You must sign up to be a client. The Jonnycake Center has a large thrift store and offers many other social service supports.

Call or visit their website for details.

Project Hand Up

15 Factory St, West Warwick, RI 02893

Phone: (401) 965-9050 Web: projecthandup.net



While not in Chariho, Project Hand Up serves all Rhode Island residents with no requirements. They are a weekly independent food supplement program providing food so residents do not have to choose between eating and paying bills.

For a \$6.00 donation to their organization, you will receive roughly \$200 worth of groceries or more.

Visit their website for details, days, and times of distribution. .



CharihoYouth.org/health



Housing



WARM Center of Westerly

56 Spruce Street, Westerly, RI 02891

Phone: (401) 596-WARM (9276) Web: warmcenter.org

The mission of the WARM Center is to "provide a continuum of care and service to the homeless and needy by providing affordable housing and assuring supportive services, and to help the homeless and needy build self-esteem and move toward independent and responsible living."



Emergency Housing Assistance | United Way 2-1-1

Phone: Dial 211 Web: unitedwayri.org/get-help/2-1-1

United Way 2-1-1 in Rhode Island is a 24/7 social and human services helpline that offers free and confidential referrals to programs and services throughout the state. .



Rhode Island Housing

**Phone: (401) 457-1234 Web: rihousing.com
info@rihousing.com**

RIHousing works to ensure that all people who live in Rhode Island can afford a healthy home that meets their needs. They offer information on affordable housing, homebuyer education, rental and mortgage assistance programs.



RI Coordinated Entry System

Phone: (401) 277-4316 Web: www.cesri.info

If you are currently, or about to be facing homelessness, you can call, or chat with a coordinated entry agent who can assist you in finding a shelter or other accommodations.

Utilities

LIHEAP (Low Income Home Energy Assistance Program) & Other Fuel and Weatherization Programs

Apply through Tri-County Community Action South

Phone (401) 515-2459 Web: www.tricountyri.org/services/fuel-assistance-weatherization

LIHEAP helps eligible low-income households pay their heating bills through federal grants to the household. Tri-County can also help qualified residents with grants for emergency boiler repairs, water assistance, and weatherization.

FCC Affordable Connectivity Program

Phone (877) 384-2575 Web: www.affordableconnectivity.gov

The Affordable Connectivity Program (ACP) is a U.S. government program that helps many low-income households pay for broadband service and internet-connected devices like a tablet or laptop.



CharihoYouth.org/health



General Assistance



UNITED WAY OF RHODE ISLAND 2-1-1

Phone: 211 Web: unitedwayri.org/get-help/2-1-1

211 is a free, confidential service where trained professionals can connect you with housing, food, affordable childcare, and much more. You can call or chat with staff or use their website to find the resources you need.



Tri-County Community Action

**Phone: (401) 351-2750 Web: tricountyri.org
4350 S County Trail, Charlestown, RI 02813**

Tri-County offers a broad range of social, health, education, job training, prevention, and other emergency and supportive services to community residents from birth throughout all life cycles. Apply for LIHEAP heating assistance, Head Start early learning programs and many more.



Jonnycake Center of Westerly

**Phone: (401) 377-8069 Web: jonnycake.org
23 Industrial Dr, Westerly, RI 02891**

Jonnycake Center of Westerly provides services in cooperation with other agencies in our service area to assist people through crisis situations & work with each individual to find a path out of dependency toward self-sufficiency. Services include a food pantry, voucher referral to shop in their thrift store, and financial assistance program.



Rhode Island Department of Human Services (DHS)

HealthSource RI

Health Coverage: 1-855-840-4774

Health and Human Services: 1-855-697-4347

<https://healthyrhode.ri.gov> (Customer Portal)

<https://dhs.ri.gov> (State Website)

DHS works hand-in-hand with community partners and resources throughout our great State to deliver critical benefits, supports, and services to more than 300,000 families, adults, children, older adults, individuals with disabilities, and veterans every year. Apply for affordable health care. Start here to apply for Child Care Assistance, SNAP, Cash Assistance, and health coverage for seniors and people with disabilities.



CharihoYouth.org/health



**CHARIHO
COMMUNITY
HEALTH WORKER**

General Assistance Continued

Rhode Island Non-Emergency Transportation (MTM)

1-855-330-9131 (TTY: 711)

Online: www.mtm-inc.net/rhode-island

MTM is the state of Rhode Island's non-emergency medical transportation (NEMT) manager. We arrange rides for eligible Rhode Island residents as follows:

- Medicaid recipients can receive rides to appointments with Medicaid-covered healthcare providers if you have no other way to get there
- Non-Medicaid enrollees who qualify for the Elderly Transportation Program (ETP) can receive rides to medical services
- Participants in the Temporary Assistance for Needy Families (TANF) Program/RI Works can receive monthly bus passes to pursue employment opportunities

Rhode Island Special Needs Emergency Registry

401-222-5960 / RI Relay 711

Online: health.ri.gov/emergency/about/specialneedsregistry

Enrolling in the Special Needs Emergency Registry lets police, fire, and other first responders in your community better prepare for and respond to your needs during a hurricane, storm, or other emergency.

Enrollment in the Registry does not guarantee assistance but allows first responders to appropriately plan for, prepare for, and respond to the community's needs.

Many people may need extra help during a time of emergency, including people who:

- Use life support systems such as oxygen, respirator, ventilator, dialysis, pacemaker, or who have chronic conditions and require treatment (e.g., diabetics requiring insulin);
- Have mobility needs and use a wheelchair, scooter, walker, cane, or other mobility device;
- Are visually impaired, blind, hard of hearing, or Deaf;
- Have speech, cognitive, developmental or behavioral health disabilities; or
- Use assistive animals or a prosthesis.



Veteran Support



RI Department of Veterans Services

(401) 921-2119 Web: vets.ri.gov

The official state of Rhode Island department is dedicated to the men and women who have served in the US Armed Forces.



US Department of Veterans Affairs

24/7: 800-698-2411 Web: va.gov

The federal department overseeing veterans benefits, health care and support.

Veterans Crisis Line

Dial 988 then Press 1 Send a text message: **838255**



Web: veteranscrisisline.net

24/7, confidential crisis support for Veterans and their loved ones
You don't have to be enrolled in VA benefits or health care to connect.

Operation Stand Down Rhode Island

(401) 383-4730 Web: osdri.org



Operation Stand Down is an independent 501(c)(3) non-profit organization and Rhode Island's primary nonprofit resource for homeless and at-risk veterans. Their mission is to strengthen the veteran community by providing crucial wrap-around services.



Heroes Horizons, Hopkinton, RI

401-377-2950 Web: heroes-horizons.org

Heroes Horizons was created to assist local veterans with day-to-day needs through hands-on volunteer programs and to raise awareness for veteran suicide. Other programs include utility assistance, legal help, and home repair.



Crisis Support and Hotlines

988 Suicide & Crisis Lifeline

24/7 Call or Text 988 Web: bhlink.org



Calling 988 connects you with a Rhode Island-based mental health professional who can help with thoughts of suicide, mental health crisis, substance use crisis, and any other emotional distress. You can call during your own mental health crisis, or worried about a loved one who is struggling.

Kids' Link Rhode Island

24/7: 1-855-543-5465 Web: lifespan.org/centers-services/kids-link-ri



Kids' Link RI™ is a behavioral health triage service and referral network. A program offered in collaboration with Gateway Healthcare, Lifespan, Hasbro Children's Hospital and Bradley Hospital, Kids' Link RI is available 24 hours a day, seven days a week to help triage children and youth in need of mental health services and refer them to treatment providers.

Domestic Violence Resource Center of South County

61 Main Street, Wakefield, RI 02879

24/7 Hotline: 800.494.8100 Web: dvrcsc.org

Local Hotline: 401.782.3990 Office: 401.782.3995



DVRC provides a comprehensive range of services for victims of domestic violence and their children, including a confidential Safe Home, Transitional Housing and Permanent Supportive Housing units, a Helpline & Drop-In Center, Support Groups, One-on-One Counseling and Court Advocacy.

Alcoholics Anonymous Rhode Island

24/7: (401) 438-8860 Web: rhodeisland-aa.org



Alcoholics Anonymous is a fellowship of people who share their experience, strength and hope with each other that they may solve their common problem and help others to recover from alcoholism. The only requirement for membership is a desire to stop drinking.

Hope Recovery Community Center of Washington County

55 Beach St #4, Westerly, RI 0289

401-598-6400 Web: hoperecoverycenter.org



Individual peer recovery services by phone and in person in the center or community to support steps towards recovery and wellness; daily virtual and in-person mutual aid meetings and support groups; ongoing public awareness events and training opportunities.



CharityoYouth.org/health





charihoyouth.org/health

Chariho Youth Task Force
P.O. Box 780, Wyoming, RI 02898
info@charihoyouth.org

Amy Neilson, CCHW, TTS | Community Health Worker
amy@charihoyouth.org | (401) 212-2741